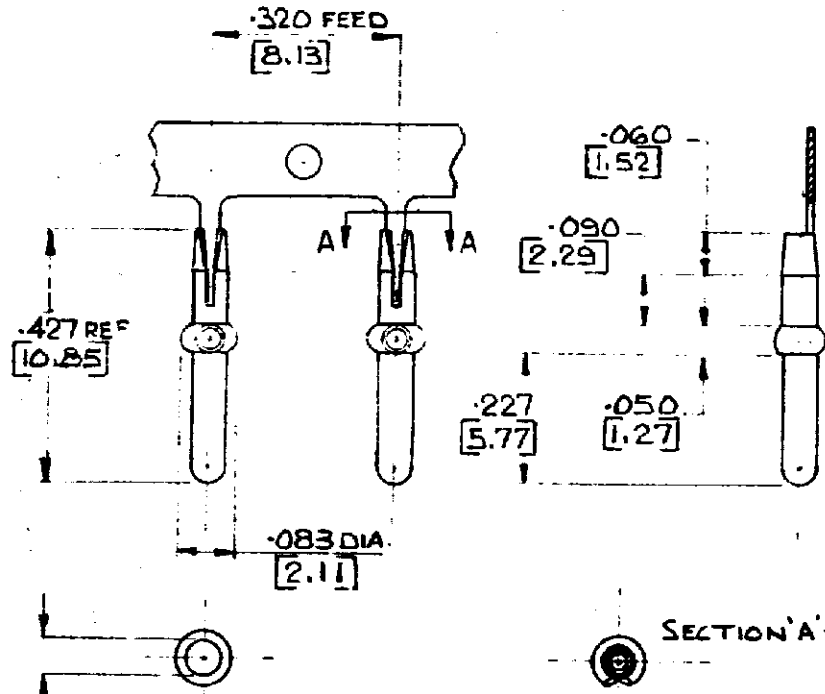


NUMBER  
C-152307

90° ANGLE (AMERICAN PROJECTION)

DIMENSIONS IN INCHES DO NOT SCALE PRINT  
DIMENSIONS THUS [ ] IN MM



TO FIT .060 [1.52] DIA.  
RECEPTACLE

TO FIT .062 [1.57] OR  
.058 [1.47] DIA.  
HOLE IN .062 [1.57] OR  
.093 [2.36] THICK P/CIRCUIT  
BOARD.

REVERSE SIDE OF -3	152307-8	GOLD
REVERSE SIDE OF -4	152307-7	PRE TIN
REVERSE SIDE OF -5	152307-6	ELECTRO-TIN OVER COPPER FLASH
	152307-5	ELECTRO-TIN OVER COPPER FLASH
	152307-4	PRE TIN
	152307-3	GOLD OVER NICKEL
	152307-2	NONE

S	-2&-3 OBSOLETE	DR	10/6/74
K	-9 DELETED	KS	12/6/74
P	0.055 WELDED	DR	11/6/74
N	-9 ADDED	PS	12/6/74
M	-8 ADDED	PS	12/6/74
L	-7 ADDED	KS	11/5/74
K	REDRAWN FOR CLARITY ONLY	KS	11/6/74
DATE	REVISION RECORD	OR	CHK DATE
10/11/74			
11/11/74			
12/11/74			

REMARKS PART NO FINISH  
 © AMP of GREAT BRITAIN LTD 1971  
 CUSTOMER COPY REFERENCE ONLY

MATERIAL AND FINISH	.010 [0.25] BRASS	CLASS	TYPE
WIRE - RANGE - INSULATION	SEE TABLE		
TOLERANCE EXCEPT AS NOTED	SCALE 4:1	SOC NO	REV
NAME	E.A. C-152307		
.060 [1.52] DIA PIN FOR P.C. BOARD			

PRINT DIST